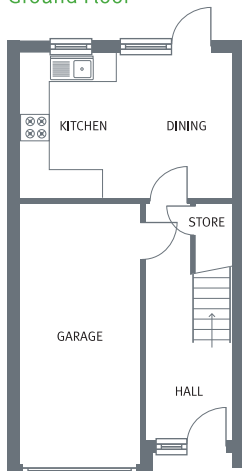


The Vermeer • 4 Bedroom home

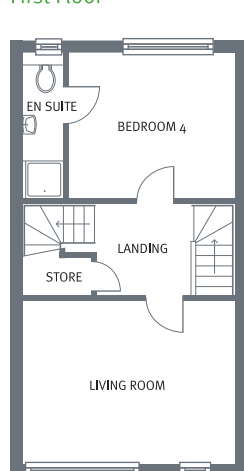


A three storey home with kitchen/dining room, spacious living room, en-suite shower rooms to two of the bedrooms and integral single garage.

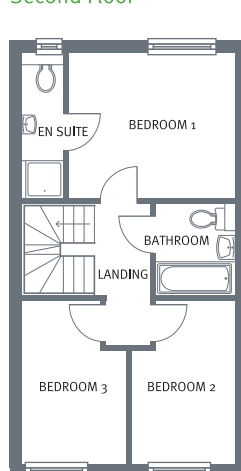
Ground Floor



First Floor



Second Floor



Ground Floor

Room	Metres	Feet & Inches
Kitchen/Dining	4.6 x 3.18	15'1" x 10'5"

First Floor

Room	Metres	Feet & Inches
Bedroom 4	3.68 x 3.22	12'0" x 10'6"
Living Room	4.67 x 3.60	15'3" x 11'9"

Second Floor

Room	Metres	Feet & Inches
Bedroom 1	3.68 x 3.18	12'0" x 10'5"
Bedroom 2	3.60 x 2.80	11'9" x 9'2"
Bedroom 3	2.49 max x 2.30 max	8'2" max x 7'6" max

Design and specification.

Gleeson is constantly seeking ways to improve the design, specification and construction of its properties and reserves the right to make alterations at any stage during development. Whilst every effort is made to produce up to date literature, this information should not be regarded as an infallible guide to current specifications - please check the latest details with our sales centre. Due to the nature of construction room sizes may vary and purchasers are advised to satisfy themselves as to their accuracy. Kitchens and bathroom layouts are indicative only. Individual elevations and finishes may vary between each plot and each development and may be handed, these should be checked with our sales centre. The computer generated image is intended purely as a guide, as certain details and finishes may have changed. Please ask our sales consultant for the most up to date information. Image for illustration purposes only.

homes by
gleeson
builders for generations