

BELVOIR!

the lettings specialist

www.belvoirlettings.com

Monarch Drive, Kingsmead, Northwich, Cheshire, cw8 2gr

Ref:P1158 £1300 pcm

www.belvoirlettings.com/Northwich/57737

4 Beds, Unfurnished



Belvoir Lettings Northwich

The Gate House
23 Castle street
Northwich
Cheshire
CW8 1BA

T: 08456 525 525

F: 08456 525 526

E: northwich@belvoirlettings.com

Summary

A beautifully finished executive, 4 bedroom, detached family home, finished to a very high standard in the popular Kingsmead development. Kingsmead is a very popular landscaped suburb of Northwich with all amenities, supermarkets and schools including Sir John Deanes 6th form College. (consistently ranked in the top ten in the country) on the doorstep. Available furnished by negotiation. Ideally situated close to the A556 trunk road, ideal for the motorway network, and commuting to Manchester, Chester, Runcorn etc.. FEATURES: Quality fitted and equipped dining kitchen Lounge and sepa...

Available From: 14 January 2009



BELVOIR!

the lettings specialist

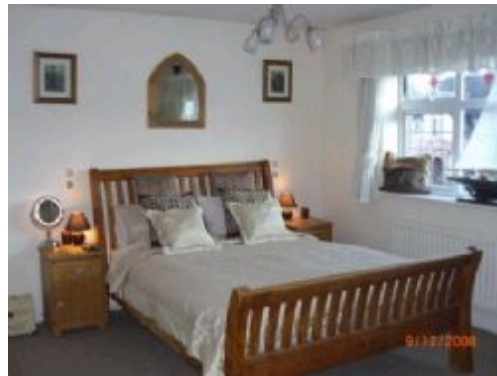
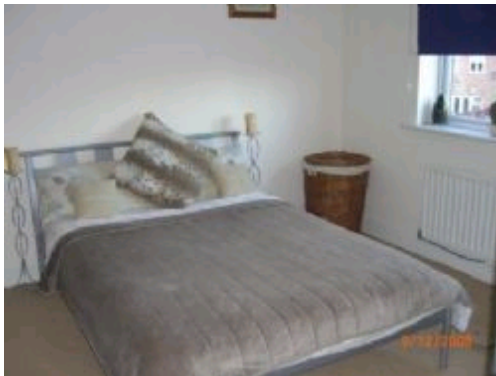
www.belvoirlettings.com

Monarch Drive, Kingsmead, Northwich, Cheshire, cw8 2gr

Ref:P1158 £1300 pcm

www.belvoirlettings.com/Northwich/57737

4 Beds, Unfurnished



Belvoir Lettings Northwich

The Gate House
23 Castle street
Northwich
Cheshire
CW8 1BA

T: 08456 525 525

F: 08456 525 526

E: northwich@belvoirlettings.com

Available From: 14 January 2009

Description

A beautifully finished executive, 4 bedroom, detached family home, finished to a very high standard in the popular Kingsmead development. Kingsmead is a very popular landscaped suburb of Northwich with all amenities, supermarkets and schools including Sir John Deanes 6th form College. (consistently ranked in the top ten in the country) on the doorstep. Available furnished by negotiation. Ideally situated close to the A556 trunk road, ideal for the motorway network, and commuting to Manchester, Chester, Runcorn etc.. FEATURES: Quality fitted and equipped dining kitchen Lounge and separate dining room Four bedrooms two with ensembles Family bathroom + downstairs cloakroom N... (continued on next page)



Monarch Drive, Kingsmead, Northwich, Cheshire, cw8 2gr

Ref:P1158 £1300 pcm

www.belvoirlettings.com/Northwich/57737

4 Beds, Unfurnished

Belvoir Lettings Northwich

The Gate House
23 Castle street
Northwich
Cheshire
CW8 1BA

T: 08456 525 525

F: 08456 525 526

E: northwich@belvoirlettings.com

Available From: 14 January 2009

Description continued

(continued from previous page) ...eutral d cor throughout
Enclosed rear garden Double electric opening garage
ACCOMMODATION: Entrance hall: Stairs to landing and doors to all downstairs rooms and cloaks cupboard.
Cloakroom: Low level wc and wash hand basin.
Dining/Kitchen: Beautifully fitted spacious split level kitchen with modern wall and base units, one and a half bowl ss sink, integral double oven, gas hob and extractor fan, fridge/freezer and dishwasher. There is ample room for a dining table and chairs. A galleried sitting area: A cosy family area with TV point, double patio doors and door through to... Utility room: Fitted with complementary units, a cloaks cupboard, one and a half bowl sink plumbed for washing machine and having a door to the garage and the rear garden. Lounge Overlooking the front garden with an Adams style fire surround with a gas coal effect fire. Dining room: On the first floor; Bedroom 1: Attractive double room with a walk in dressing area and door to .. Ensuite: Low level wc, bath, walk in shower and wash hand basin
Bedroom 2: Double room with full width fitted wardrobes and door to .. Ensuite: Low level wc, shower cubicle and wash hand basin
Bedroom 3: Double room with fitted wardrobes
Bedroom 4: Good sized single room
Bathroom: White four piece bathroom suite with a low level wc, bidet, pedestal wash hand basin, bath and shower cubicle. Outside: At the back is an enclosed rear garden and a good sized patio area, lawns and mature shrubs. At the front there is ample parking for two cars plus a border of mature plants and shrubs. Garage: Spacious garage with electrically operated up and over doors

Unfurnished

Landlord Accepts: Children, No Smokers,

Parking: Double garage and driveway parking for 2 cars

Heating: GCH



BELVOIR!

the lettings specialist

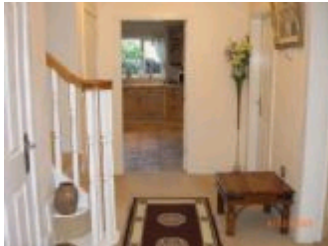
www.belvoirlettings.com

Monarch Drive, Kingsmead, Northwich, Cheshire, cw8 2gr

Ref:P1158 £1300 pcm

www.belvoirlettings.com/Northwich/57737

4 Beds, Unfurnished



Belvoir Lettings Northwich, The Gate House, 23 Castle street, Northwich, Cheshire CW8 1BA
Telephone: 08456 525 525 Fax: 08456 525 526

Available From: 14 January 2009
