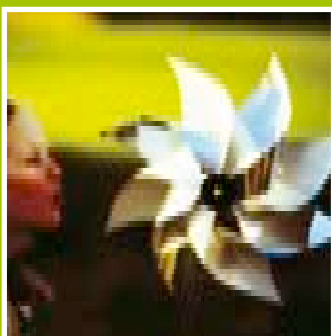




The Rembrandt

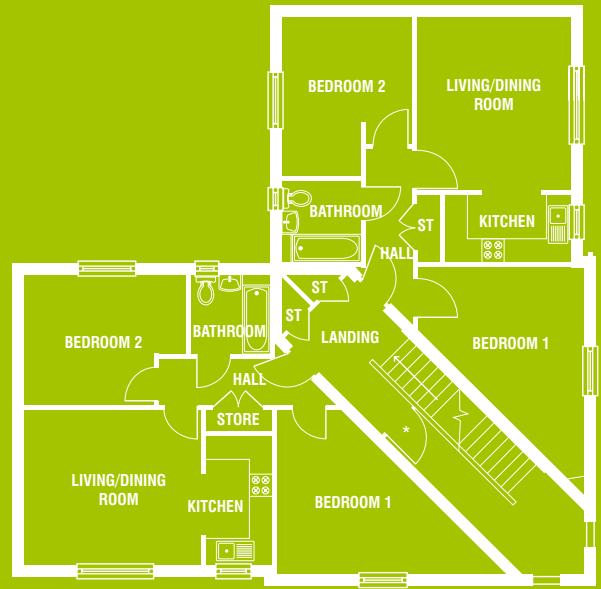


0161 761 8100
www.gleeson-homes.co.uk



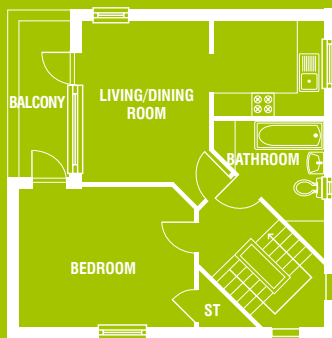


Ground Floor



First/Second Floor

*No door on first floor



Third Floor

The Rembrandt Floor Plans

Ground Floor

Living/Dining	4.86m x 3.85m
	15'11" x 12'7"
Kitchen	3.23m x 2.41m
	10'7" x 7'10"
Bedroom 1	3.69m x 3.23m
	12'1" x 10'7"
Bedroom 2	5.69m max. x 3.30m max.
	18'8" max. x 10'10" max.

First/Second Floor

Living/Dining	4.41m x 3.85m
	14'6" x 12'8"
Kitchen	3.22m x 1.69m
	10'6" x 5'6"

Bedroom 1	4.10m max. x 5.65m max.
	13'5" max. x 18'6" max.
Bedroom 2	4.06m max. x 3.23m max.
	13'3" max. x 10'7" max.

Third Floor

Living/Dining	4.04m max. x 3.24m max.
	13'3" max. x 10'8" max.
Kitchen	2.74m x 2.38m
	9'0" x 7'10"
Bedroom	4.40m max. x 3.47m max.
	14'5" max. x 11'5" max.

Although every care has been taken to ensure its accuracy, the information in this brochure is for guidance only and does not constitute a contract, part of a contract or warranty. Floorplans and computer generated image depict typical Rembrandt apartments. Homes may be a handed version of the plans shown. All dimensions are approximate and should not be used when ordering carpets and soft furnishings. Gleeson reserve the right to alter any individual property or part of the development. For SAP energy ratings, please ask the Homes Consultant.