



GROVE VILLAGE

BE PART OF A GREATER MANCHESTER



The Renoir Floor Plans

Ground Floor

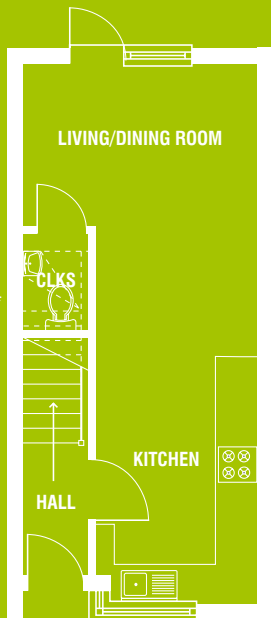
Living/Dining	4.63m x 3.72m max. 15'2" x 12'2" max.
Kitchen	3.97m x 2.56m 13'0" x 8'4"

First Floor

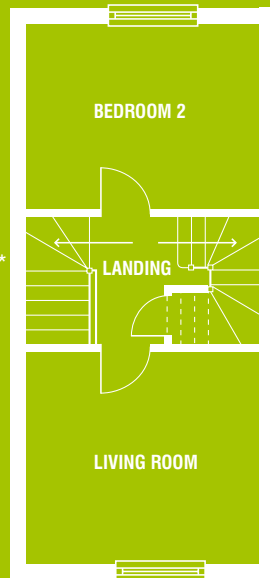
Living Room	3.72m max. x 3.50m max. 12'2" max. x 11'5" max.
Bedroom 2	3.72m x 2.91m 12'2" x 9'6"

Second Floor

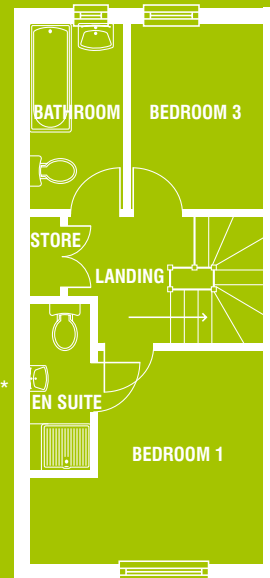
Bedroom 1	3.72m max. x 3.49m max. 12'2" max. x 11'5" max.
Bedroom 3	2.91m x 2.12m 9'6" x 6'11"



Ground Floor



First Floor



Second Floor

*Window position on left end terrace
**Window position on right end terrace

Although every care has been taken to ensure its accuracy, the information in this brochure is for guidance only and does not constitute a contract, part of a contract or warranty. Floorplans and computer generated image depict typical Renoir housetype. Homes may be a handed version of the plans shown. All dimensions are approximate and should not be used when ordering carpets and soft furnishings. Gleeson reserve the right to alter any individual property or part of the development. For SAP energy ratings, please ask the Homes Consultant.

0114 261 2900

www.gleeson-homes.co.uk

